

# Accessibility Ambassade Hotel

Situation sketch with regard to accessibility for people with a physical  
restriction

# ACCESSIBILITY

- The Ambassade Hotel is located in the heart of the beautiful canals, which was added in 2010 to the UNESCO World Heritage list. The hotel consists of several 17th century canal houses joined together. Given the nature of the hotel and the stringent regulations regarding modifications to the premises, the hotel is not wheelchair accessible yet.
- The Ambassade Hotel examines how accessibility can be improved. In any future rebuilding we will do our utmost to make the hotel more accessible for people with a physical restriction.

# Entrance

- Our hotel is situated in a monumental building this means we unfortunately are limited in making adjustments to the building.
- The main entrance to the hotel is only accessible via 3 steps each 15.3 cm high.
- We placed handrails on both sides



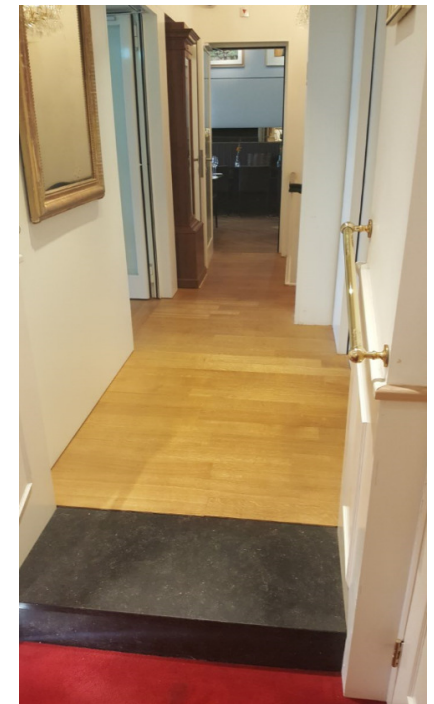
# Front desk

- Once inside, you find yourself in the hotel lobby. The reception area is located straight ahead, at your left-hand side you find the Library bar and on the right-hand side the elevator.
- The floor in the reception, until the elevator is equal.
- The Library bar can only be accessed through 2 steps of each 20 cm. high.
- On both sides handrails are placed



# Brasserie

- The brasserie has a private entrance from the canal which is difficult to access for people with a physical restriction.
- The brasserie can also be reached via the main entrance, and then the elevator. However, the passageways are not too wide, and here too are two small stages with respective two steps of 18 to 16 cm high and 1 step of 18.5 cm high.
- Hand railing are placed next to both stages
- In the restaurant are also a few steps but there are plenty tables accessible without these steps. Please indicate if you require an easy accessible table.



# Toilets

- From the restaurant the toilet is accessible by 1 step of 18.5 cm in the hallway
- There are handrails next to the steps
- The toilets are not equipped as disabled toilets but reasonably spacious and easily accessible
- The men's toilet has a handrail installed
- The ladies toilet we soon place handrails

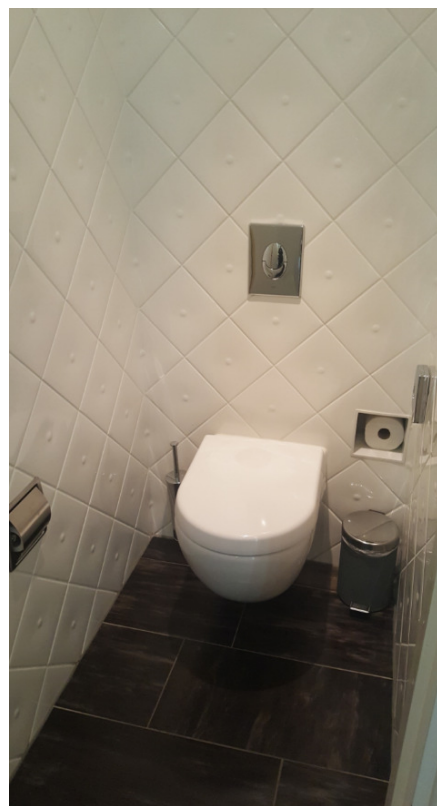


# Pictures toilet



Entrance Ladies toilet

Ladies toilet



Entrance Men's toilet

Men's toilet



# Chambers

- The Embassy Hotel has no rooms suitable for disabled.
- However, there are rooms accessible by elevator and can remove furniture but these rooms are not accessible by wheelchair.



# Additional information

Please consult our reception via telephone or email for additional information:



+31 (0)20 555 0 222



info@ambassade-hotel.nl